

EXTERIOR LIGHTING REPAIR

- POLE LIGHT REPAIRS
- WALL PACK LIGHTS
- WALL SCONCE LIGHTS
- CANOPY LIGHTS
- GROUND LIGHTS
- SIGN LIGHTS



FIND OUT HOW HOUSTON STAYS LIT AT

www.blancoelectric.com OR service@blancoelectric.com



BELCO
BLANCO ELECTRIC LTD. CO.

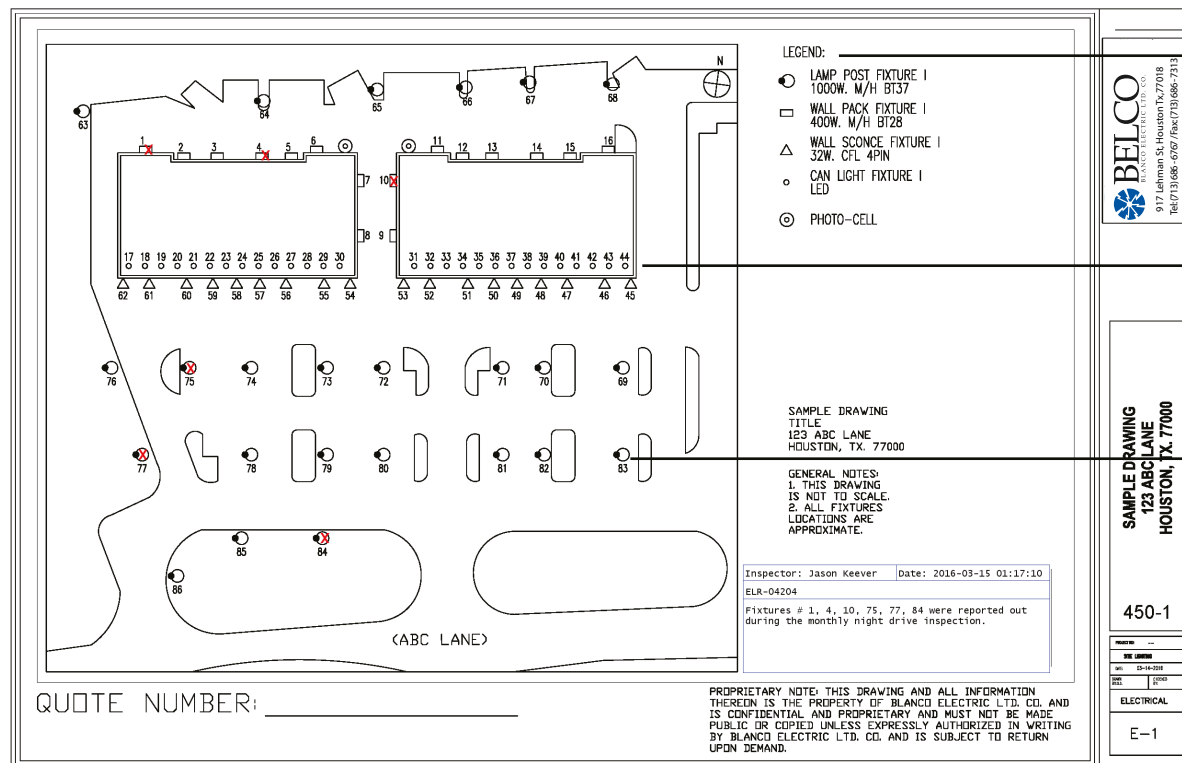
SAMPLE

BLANCO ELECTRIC'S EXTERIOR LIGHTING REPAIR PROGRAM WAS DESIGNED WITH YOU IN MIND.

IF YOU ARE A PROPERTY MANAGER, OWNER, OR TENANT, YOU UNDERSTAND HOW EXPENSIVE IT CAN BE TO KEEP THE LIGHTS WORKING ALL THE TIME. WITH THIS IN MIND, BELCO HAS DEVELOPED A SERVICE PROGRAM THAT PROVIDES YOU WITH THE TOOLS YOU NEED TO KEEP YOUR LIGHTING MAINTENANCE WITHIN BUDGET WHILE MONITORING THE EFFICIENCY OF YOUR LAMPS AND BALLAST TO MAXIMIZE YOUR INVESTMENT.

DETAILED MAPS

OUR PROGRAM STARTS WITH A DETAILED MAP. THE MAP WE CREATE OF YOUR PROPERTY INCLUDES A LEGEND TO IDENTIFY EACH TYPE OF LIGHT AND A NUMBERING SYSTEM TO TRACK THE REPAIRS MADE TO EACH FIXTURE. SOME OF OUR COMPETITORS CLAIM TO PROVIDE SIMILAR SERVICES, BUT WITH BLANCO ELECTRIC'S PROGRAM YOU ARE GUARANTEED TO RECEIVE A MAP WITH EACH QUOTE. WE BELIEVE THAT YOU SHOULD KNOW EXACTLY WHAT REPAIRS YOU ARE PAYING FOR.




SAMPLE

ACCURATE TRACKING SYSTEM

THIS INFORMATION ALLOWS US TO KEEP TRACK OF HOW LONG YOUR LAMPS AND BALLAST LAST. IT IS USED TO AUTOMATICALLY GENERATE WARRANTIES DURING THE QUOTING PROCESS.

THE ELR WARRANTY

LAMP AND LABOR COST FOR 30 DAYS
BALLAST AND LABOR COST FOR 30 DAYS
BALLAST ONLY COST FOR 365 DAYS

			Lighting Repair Tracker Sample Company - Sample Company 123 ABC Lane, Houston, TX 77007 Client ID: 450 - 1			Legend S Socket B Capacitor B Ballast L Lamp		
Date	Job #	Svc	Date	Job #	Svc	Date	Job #	Svc
	Light: 1			Light: 19			Light: 38	
	Light: 2		07/10/2014	S-6878	L	07/10/2014	S-6878	L
	Light: 3			Light: 20			Light: 39	
	Light: 4		07/10/2014	S-6878	L	07/10/2014	S-6878	L
	Light: 5			Light: 21			Light: 40	
	Light: 6		07/10/2014	S-6878	L	07/10/2014	S-6878	L
	Light: 7			Light: 22			Light: 41	
	Light: 8		07/10/2014	S-6878	L	07/10/2014	S-6878	L
	Light: 9			Light: 23			Light: 42	
	Light: 10		07/10/2014	S-6878	L	07/10/2014	S-6878	L
	Light: 11			Light: 24			Light: 43	
	Light: 12		07/10/2014	S-6878	L	07/10/2014	S-6878	L
	08/01/2016	S-6878		Light: 25			Light: 44	
	Light: 13		07/10/2014	S-6878	L	07/10/2014	S-6878	L
	08/01/2016	S-6878		Light: 26			Light: 45	
	Light: 14		07/10/2014	S-6878	L	07/10/2014	S-6878	L
	08/01/2016	S-6879		Light: 27			Light: 46	
	Light: 15		07/10/2014	S-6878	L	07/10/2014	S-6878	L
	08/01/2014	S-6879		Light: 28			Light: 47	
	Light: 16		07/10/2014	S-6878	L	07/10/2014	S-6878	L
	08/01/2014	S-6879		Light: 29			Light: 48	
	Light: 17		07/10/2014	S-6878	L	07/10/2014	S-6878	L
	08/01/2014	S-6879		Light: 30			Light: 49	
	Light: 18		07/10/2014	S-6878	L	07/10/2014	S-6878	L
	08/01/2014	S-6879		Light: 31			Light: 50	
	Light: 19		07/10/2014	S-6878	L	07/10/2014	S-6878	L
	08/01/2014	S-6879		Light: 32			Light: 51	
	Light: 20		07/10/2014	S-6878	L	07/10/2014	S-6878	L
	08/01/2014	S-6879		Light: 33			Light: 52	
	Light: 21		07/10/2014	S-6878	L	07/10/2014	S-6878	L
	08/01/2014	S-6879		Light: 34			Light: 53	
	Light: 22		07/10/2014	S-6878	L	07/10/2014	S-6878	L
	08/01/2014	S-6879		Light: 35			Light: 54	
	Light: 23		07/10/2014	S-6878	L	07/10/2014	S-6878	L
	08/01/2014	S-6879		Light: 36			Light: 55	
	Light: 24		07/10/2014	S-6878	L	07/10/2014	S-6878	L
	08/01/2014	S-6879		Light: 37			Light: 56	
	Light: 25		07/10/2014	S-6878	L	07/10/2014	S-6878	L
	08/01/2014	S-6879		Light: 38			Light: 57	
	Light: 26		07/10/2014	S-6878	L	07/10/2014	S-6878	L
	08/01/2014	S-6879		Light: 39			Light: 58	
	Light: 27		07/10/2014	S-6878	L	07/10/2014	S-6878	L
	08/01/2014	S-6879		Light: 40			Light: 59	
	Light: 28		07/10/2014	S-6878	L	07/10/2014	S-6878	L
	08/01/2014	S-6879		Light: 41			Light: 60	
	Light: 29		07/10/2014	S-6878	L	07/10/2014	S-6878	L
	08/01/2014	S-6879		Light: 42			Light: 61	
	Light: 30		07/10/2014	S-6878	L	07/10/2014	S-6878	L
	08/01/2014	S-6879		Light: 43			Light: 62	
	Light: 31		07/10/2014	S-6878	L	07/10/2014	S-6878	L
	08/01/2014	S-6879		Light: 44			Light: 63	
	Light: 32		07/10/2014	S-6878	L	07/10/2014	S-6878	L
	08/01/2014	S-6879		Light: 45			Light: 64	
	Light: 33		07/10/2014	S-6878	L	07/10/2014	S-6878	L
	08/01/2014	S-6879		Light: 46			Light: 65	
	Light: 34		07/10/2014	S-6878	L	07/10/2014	S-6878	L
	08/01/2014	S-6879		Light: 47			Light: 66	
	Light: 35		07/10/2014	S-6878	L	07/10/2014	S-6878	L
	08/01/2014	S-6879		Light: 48			Light: 67	
	Light: 36		07/10/2014	S-6878	L	07/10/2014	S-6878	L
	08/01/2014	S-6879		Light: 49			Light: 68	
	Light: 37		07/10/2014	S-6878	L	07/10/2014	S-6878	L
	08/01/2014	S-6879		Light: 50			Light: 69	
	Light: 38		07/10/2014	S-6878	L	07/10/2014	S-6878	L
	08/01/2014	S-6879		Light: 51			Light: 70	
	Light: 39		07/10/2014	S-6878	L	07/10/2014	S-6878	L
	08/01/2014	S-6879		Light: 52			Light: 71	
	Light: 40		07/10/2014	S-6878	L	07/10/2014	S-6878	L
	08/01/2014	S-6879		Light: 53			Light: 72	
	Light: 41		07/10/2014	S-6878	L	07/10/2014	S-6878	L
	08/01/2014	S-6879		Light: 54			Light: 73	
	Light: 42		07/10/2014	S-6878	L	07/10/2014	S-6878	L
	08/01/2014	S-6879		Light: 55			Light: 74	
	Light: 43		07/10/2014	S-6878	L	07/10/2014	S-6878	L
	08/01/2014	S-6879		Light: 56			Light: 75	
	Light: 44		07/10/2014	S-6878	L	07/10/2014	S-6878	L
	08/01/2014	S-6879		Light: 57			Light: 76	
	Light: 45		07/10/2014	S-6878	L	07/10/2014	S-6878	L
	08/01/2014	S-6879		Light: 58			Light: 77	
	Light: 46		07/10/2014	S-6878	L	07/10/2014	S-6878	L
	08/01/2014	S-6879		Light: 59			Light: 78	
	Light: 47		07/10/2014	S-6878	L	07/10/2014	S-6878	L
	08/01/2014	S-6879		Light: 60			Light: 79	
	Light: 48		07/10/2014	S-6878	L	07/10/2014	S-6878	L
	08/01/2014	S-6879		Light: 61			Light: 80	
	Light: 49		07/10/2014	S-6878	L	07/10/2014	S-6878	L
	08/01/2014	S-6879		Light: 62			Light: 81	
	Light: 50		07/10/2014	S-6878	L	07/10/2014	S-6878	L
	08/01/2014	S-6879		Light: 63			Light: 82	
	Light: 51		07/10/2014	S-6878	L	07/10/2014	S-6878	L
	08/01/2014	S-6879		Light: 64				
	Light: 52		07/10/2014	S-6878	L	07/10/2014	S-6878	L
	08/01/2014	S-6879		Light: 65				
	Light: 53		07/10/2014	S-6878	L	07/10/2014	S-6878	L
	08/01/2014	S-6879		Light: 66				
	Light: 54		07/10/2014	S-6878	L	07/10/2014	S-6878	L
	08/01/2014	S-6879		Light: 67				
	Light: 55		07/10/2014	S-6878	L	07/10/2014	S-6878	L
	08/01/2014	S-6879		Light: 68				
	Light: 56		07/10/2014	S-6878	L	07/10/2014	S-6878	L
	08/01/2014	S-6879		Light: 69				
	Light: 57		07/10/2014	S-6878	L	07/10/2014	S-6878	L
	08/01/2014	S-6879		Light: 70				
	Light: 58		07/10/2014	S-6878	L	07/10/2014	S-6878	L
	08/01/2014	S-6879		Light: 71				
	Light: 59		07/10/2014	S-6878	L	07/10/2014	S-6878	L
	08/01/2014	S-6879		Light: 72				
	Light: 60		07/10/2014	S-6878	L	07/10/2014	S-6878	L
	08/01/2014	S-6879		Light: 73				
	Light: 61		07/10/2014	S-6878	L	07/10/2014	S-6878	L
	08/01/2014	S-6879		Light: 74				
	Light: 62		07/10/2014	S-6878	L	07/10/2014	S-6878	L
	08/01/2014	S-6879		Light: 75				
	Light: 63		07/10/2014	S-6878	L	07/10/2014	S-6878	L
	08/01/2014	S-6879		Light: 76				
	Light: 64		07/10/2014	S-6878	L	07/10/2014	S-6878	L
	08/01/2014	S-6879		Light: 77				
	Light: 65		07/10/2014	S-6878	L	07/10/2014	S-6878	L
	08/01/2014	S-6879		Light: 78				
	Light: 66		07/10/2014	S-6878	L	07/10/2014	S-6878	L
	08/01/2014	S-6879		Light: 79				
	Light: 67		07/10/2014	S-6878	L	07/10/2014	S-6878	L
	08/01/2014	S-6879		Light: 80				
	Light: 68		07/10/2014	S-6878	L	07/10/2014	S-6878	L
	08/01/2014	S-6879		Light: 81				
	Light: 69		07/10/2014	S-6878	L	07/10/2014	S-6878	L
	08/01/2014	S-6879		Light: 82				

LIGHT NUMBER

THE LIGHT NUMBER ON THE TRACKER CORRESPONDS WITH THE FIXTURE NUMBER ON THE MAP AND QUOTE.

SERVICE DATE

THE SERVICE DATE LISTS THE LAST DATE SERVICE WAS PERFORMED.

JOB NUMBER

THE JOB NUMBER REFERENCES THE REPAIR AND CORRELATES WITH THE NUMBER LISTED ON YOUR MAP AND QUOTE.

SERVICE PERFORMED

DETERMINE WHAT SERVICE HAS BEEN PERFORMED BY UTILIZING THE LEGEND LOCATED ON THE UPPER RIGHT HAND CORNER OF THE LIGHTING REPAIR TRACKER.

WARRANTY REPLACEMENT

FIXTURES THAT HAVE BEEN REPLACED UNDER WARRANTY WILL BE MARKED IN RED ON THE LIGHTING REPAIR TRACKER.

PREMATURE FAILURE

THE TRACKER IS UPDATED EACH TIME WE COMPLETE A REPAIR PROJECT. THIS ALLOWS US TO IDENTIFY WHICH COMPONENTS MAY HAVE FAILED PREMATURELY



SAMPLE

THE PRECISE QUOTE

OUR QUOTING STARTS WITH A MONTHLY INSPECTION PERFORMED AT NIGHT UTILIZING OUR PROPRIETARY ELR DATABASE. ONCE INSPECTED, AN ELR MANAGER WILL REVIEW THE INSPECTION AND CONVERT THE LIGHTING OUTAGES INTO A DETAILED QUOTE FOR REPAIRS THAT ARE NEEDED.

INITIALLY, BELCO WILL ALWAYS PRICE A LAMP REPLACEMENT. BALLAST REPLACEMENT WILL BE QUOTED ONCE A NEW LAMP HAS BEEN INSTALLED AND POWER VERIFIED.



BELCO
BLANCO ELECTRIC LTD. CO.

915 Lehman Street
Houston, Texas 77018
(713) 686-6767

Service Quote

Order#: Q - ELR-04204
Date: 03/15/2016

Bill To: Sample Company
123 ABC Lane
Houston TX 77007

Project: Sample Company
123 ABC Lane
Houston TX 77007

123 ABC Lane ELR 03/15/2016

Customer Contact: Joe Pappaloux
Customer Phone #: 713-123-4567
Service Area: 0

Quoted By: API - JK
This quote is valid until: 04/14/2016
Client ID: 450-1

Item	Quantity	Rate	Amount	Sales Tax
● Labor & Materials Setup	1.00	65.00	65.00	Y
● L&M-Lamp Replacement 400W MH ED28 (SYL M400/U/ED28) Wallpack fixture I - # 1, 4, 10	3.00	54.54	163.62	Y
● L&M-Lamp Replacement 1000W MH BT37(M1000/U/BT37 HID) Lamp post fixture I - # 75, 77, 84	3.00	68.25	204.75	Y
● Lamp Disposal Fee 10% on all mercury filled lamps	1.00	36.84	36.84	Y

60ft Bucket Truck Included

Job Description

Figure the following labor and material cost if ballasts are needed after lamp replacement is completed:

Wallpack fixture I - \$171.46/EA

Regulated by the Texas Department of Licensing and Regulation
P.O. Box 12157
Austin, Texas 78711
1-800-803-9202, 512-463-6599
www.license.state.tx.us/complaints
License # 23145

● *Signature_____

Please sign and send back via Fax (713) 686 - 7313 or Email to service@blancoelectric.com

*All quotes are valid for thirty days from the date given. Pricing given is based on the work stated in the job description and does not cover any other work presumed. If additional work is needed that is not on this quote, please contact our office for additional pricing before signing this agreement.

Page 1

Non-Taxable Amount:	0.00
Taxable Amount:	470.21
Sales Tax:	38.79
Quote Total:	509.00

● SETUP FEE

THE SETUP FEE IS A FLAT RATE FOR THE TECHNICIAN TO GET OUT TO YOUR PROPERTY, ACCESS THE LIGHTING CONTROLS, AND START THE REPAIRS.

● LABOR & MATERIALS

THE LABOR & MATERIALS CHARGE IS A FIXED RATE FOR REPAIRING YOUR LAMP, BALLAST, CAPACITOR, SOCKET, OR OTHER COMPONENT.

● FIXTURE NUMBER

THE FIXTURE NUMBER COINCIDES WITH THE NUMBERING SYSTEM ON THE MAP AND THE LIGHTING REPAIR TRACKER.

● LAMP DISPOSAL FEE

ALL MERCURY FILLED LAMPS WILL INCUR A 10% CHARGE FOR PROPER DISPOSAL.

● SIGNATURE APPROVAL

APPROVE YOUR SERVICE QUOTE. YOUR SIGNATURE IS ALL THAT IS NEEDED TO APPROVE REPAIRS.



FAQ's EXTERIOR LIGHTING REPAIR

WHAT DOES IT COST TO GET BELCO STARTED ON MY EXTERIOR LIGHTING REPAIR?

THERE IS NO UP FRONT COST. AT YOUR REQUEST BELCO WILL COME OUT, MAKE A SITE MAP, INSPECT THE PROPERTY AND PROVIDE YOU A QUOTE TO REPAIR YOUR LIGHTS.

WHAT ELSE COULD GO WRONG WITH MY LIGHTING BESIDES LAMPS AND BALLAST?

THERE ARE MULTIPLE COMPONENTS THAT MAKE UP YOUR LIGHTING SYSTEM SUCH AS TIME CLOCKS, PHOTOCELLS, CONTACTORS, IN LINE FUSES, BREAKERS, CAPACITORS, AND CIRCUIT WIRING JUST TO NAME A FEW.

HOW DOES BELCO KNOW IF I NEED A LAMP OR A BALLAST QUOTED?

EACH MONTH THAT WE FIND NEW LIGHTS OUT WE WILL PROVIDE YOU A QUOTE FOR THE LAMP ONLY AND LIST ON OUR QUOTE WHAT THE BALLAST WILL COST IF THE BALLAST IS NEEDED AFTER THE LAMP REPLACEMENT.

HOW DOES BELCO KEEP TRACK OF BALLAST THAT SHOULD BE UNDER WARRANTY?

BELCO UTILIZES AN AUTOMATED DATABASE SYSTEM TO TRACK AND CREDIT WARRANTIES.

HOW QUICKLY CAN BELCO RESPOND TO MY EMERGENCY LIGHTING REPAIR NEEDS?

WE PROVIDE EMERGENCY SERVICE 24 HOURS A DAY, 7 DAYS A WEEK, 365 DAYS A YEAR AND CAN RESPOND TO MOST EMERGENCIES WITHIN AN HOUR OF NOTIFICATION.

HOW FLEXIBLE IS BELCO TO MY HIGH TRAFFIC FACILITY?

BELCO CAN SCHEDULE REPAIRS DURING YOUR SLOW PERIODS AT NO ADDITIONAL COST.

DOES BELCO WARRANTY LIGHTING REPAIRS?

BELCO WILL WARRANTY ANY BALLAST WE REPLACE FOR ONE YEAR AND LAMPS FOR A PERIOD OF 90 DAYS.

THERE ARE MANY ELECTRICAL CONTRACTORS THAT CAN CHANGE OUT LAMPS AND BALLAST. BY USING BELCO YOU GET MORE. YOU GET A CONTRACTOR THAT WILL INSPECT YOUR LIGHTING, QUOTE THE REPAIRS, AND PROVIDE YOU WITH THE TOOLS YOU NEED TO KEEP TRACK OF ALL REPAIRS MADE ON YOUR FACILITY.

CONTACT US

PHONE: (713) 686-6767 / FAX: (713) 686-7313

WWW.BLANCOELECTRIC.COM

915 LEHMAN ST, HOUSTON, TX 77018



BELCO
BLANCO ELECTRIC LTD. CO.